

KEY FEATURES

- Compatible with most of the graphic machines on the market
- A single User Interface to manage several graphic machines
- Integration of the visual identity of a television channel
- Creation of models related to the templates of the graphic machine
- Management of tweets
- Management of crawls
- Works with all the play-out automation systems on the market
- Modular and scalable system
- NRCS Plug-In, Liberty Linebuilder, to add and visualise secondary events
- Automatic branding of your playlist with Liberty Middleware
- Connected to Sphere, MBT's Media Asset Management system
- Connected to Sphere Service Manager and Media File Mover for transfer and delivery of files

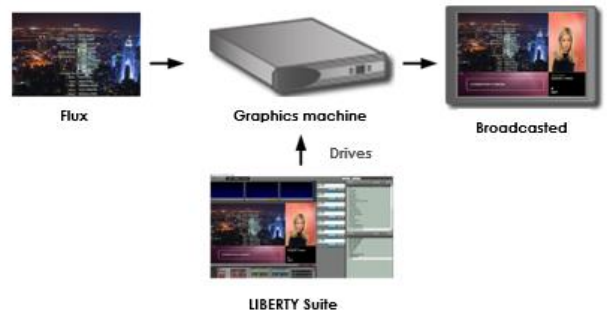
Liberty

Graphics Workflow & Automation

Liberty is a software application suite that allows to control broadcast equipment that is in charge of the display of graphics. Modules of the Liberty suite manage the editorial data for the content of graphic elements, such as the title of a program announced in a coming next. This control can be automatic and/or manual.

Graphic Asset Management

Liberty can be considered as a graphic asset management system which allows to link content to graphic templates, compatible with most graphics solutions on the broadcast and audio-visual market.



The MBT systems are compatible with a large number of manufacturers on the market and the number of partnerships with these manufacturers is constantly increasing.

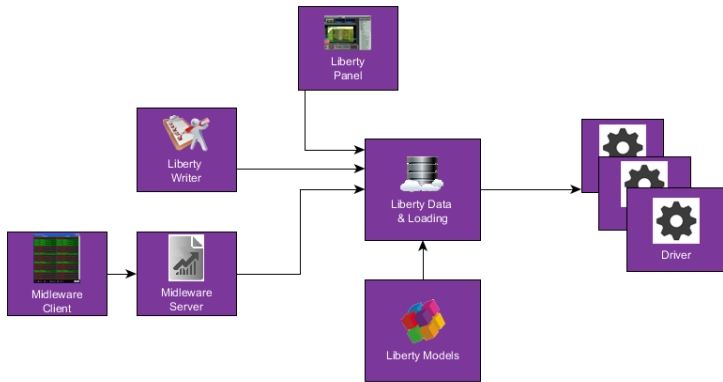
The Liberty suite has been designed to manage graphics on different platforms: 2D/3D equipment, logo generator, image library, character generator, but also in all areas of production, post-production, news, broadcast, acquisition, traffic system and NRCS.

A single User Interface

Liberty controls branding machines like Avid's HDVG, Ross' xPression and so more, which produce the graphics. Liberty thus controls dynamic branding for the playout and has a dedicated user interface while driving a heterogeneous set of graphic machines available on the market. It is possible to create a live set that allows quick access to recurring and important graphic elements. This allows to quickly broadcast last minute information. For example a logo, abduction alert or crawls.



Liberty Panel, the user client of Liberty, allows the operator to check and modify the content (the graphics) of the playlist.



Modular and scalable solution

Based on a client / server architecture, the Liberty Suite is modular, easily expandable and interoperable. Liberty allows you to manage all the graphics in an independent way.

Liberty can be controlled by automation systems of different brands but works natively with MBT's Phoenix Automation system. The system is able to perform dynamic branding for on-air channels, preview and even for billboards.

Liberty is independent of the used graphic machines which makes your graphics system scalable. You can therefore change or complete your solution with new graphic machines of any brand without changing your workflow and data.

Liberty Writer

Liberty Writer allows to load playlists and execute rules by detecting parameters to manage the graphics.

This module will make it possible to create graphic instances which will be played on a graphic machine (HDVG, xPression, Dekocast ...) but it also allows to generate a playlist which will then be loaded on a playout automaton.

Liberty Writer constantly scans a folder in which the playlists will be dropped. Playlists will be processed by the Writer to generate graphic instances. A single Liberty Writer has the ability to supply both the Main channel and the Backup chain with the requested graphics.

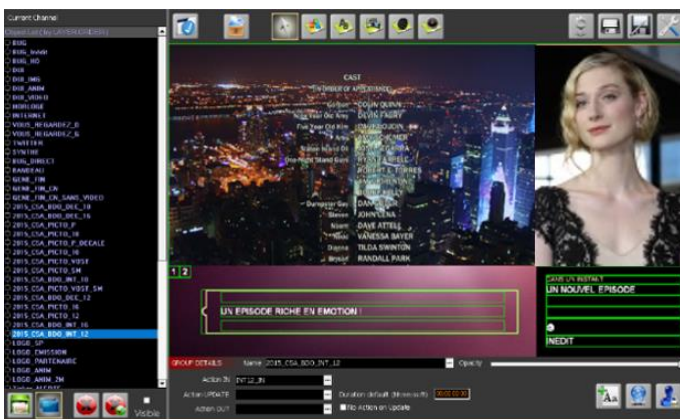


Liberty Data

Liberty Data is the data repository module hosting templates and graphic instances. Liberty Data can be considered as the chief conductor in the sense where it receives orders from Liberty Panel when the user wants to send a graphic on air as it receives orders from the automation.

Liberty Data has the intelligence to know to which graphic machine the graphic element must be sent. It is also this module which allows the control of dynamic branding for the playout.

Liberty Models



Liberty Models is the configuration tool of Liberty. It is with this tool that the visual identity of a TV station can be integrated into Liberty. This component is the tool par excellence for the administrator and ensures the consistency between Liberty and the templates of the graphic machines.

The Liberty suite handles all aspects of your branding (logos, coming next, crawls, feeds ...) and all workflows from the simplest to the most complex with a single tool.

Liberty Linebuilder

Liberty Linebuilder is a very powerful plugin for a NewsRoom Control System (NRCS) that allows to add and to visualise secondary events.

With Liberty's Linebuilder it is possible to update stories in the NRCS by adding Items. In a NRCS each item within a story is independent. Linebuilder allows to include metadata within the Items (offset, etc) enabling the playout automation to build primary and secondary events in the playlist.

Double clicking on a NRCS line (video) opens Liberty's Linebuilder and loads the low resolution file of the media.

When the story is saved, Linebuilder updates the story through the Mos gateway and sends it to the automation.

Through the Linebuilder User Interface you can browse the low resolution file and preview the representative graphics in overlay of the video.



You can select a graphic template, create new graphic instances, and add secondary events directly on the timeline.

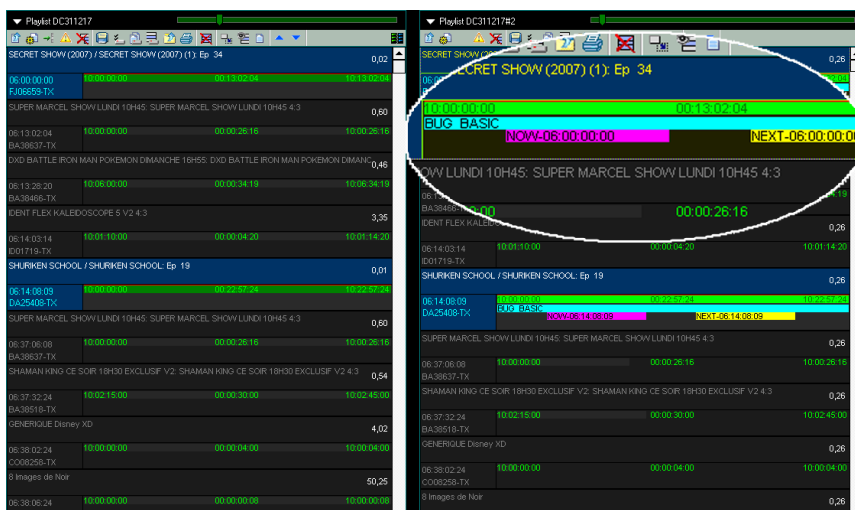
Liberty Middleware

Liberty Middleware is a client / server application that allows you to edit, manage and export graphics for playout channels. Liberty Middleware generates a new playlist by adding the secondary events.

From a playlist with only primary events, the Middleware is able to generate automatically or manually a complete new playlist with secondary events.

Playlist parsing and rebuilding

The initial playlist without any graphic elements is analysed and re-fabricated with secondary events by applying graphic templates predefined in rules.



The Middleware Client allows you to view and monitor the differences between the initial playlist and the playlist enhanced with graphics.

The added graphic instances can be checked and edited manually until the last moment. The Middleware also manages the different versions generated by the application.

All traffic systems can provide the initial playlist. The Middleware synchronizes the new playlist with the traffic system. The Middleware is then able to send the playlist to a playout automation system.

TECHNICAL INFORMATION

Features	Description
Data Platform and Databus	Connection to the data platform through the Vertex databus
SOA and Distributed Architecture	Core system is based on a SOA and distributed architecture
Open System	API, VDCP, Files, Liberty Gateway
Compatible Graphics Machines	With all kind of graphics engines; Ross Xpression, Avid Orad, Chyron, Chronos, etc ...
Object Technology	Object Data Server for templates and graphic instances
Virtualisation	Graphic virtualisation for post-production or onair branding
Monitoring	Representative graphics for easy editing and preview, export to graphics engine for real preview
Dedicated User Interface	One GUI (Liberty Panel) but control of heterogeneous graphic machine park
Playlist Parsing and data connectivity	Import and Export of playlists, connectivity with DB or MAM content for graphics creation
Management of tweets	The tweets sent during a live are inserted into an instance and sent On Air
Management of crawls	Management of news headlines mainly for news and sports channels
OS	Windows
Unicode System	Multi-lingual user interface thanks to integrated Unicode system
Dedicated Client	Dedicated client for specific production like sport, SMS management, RSS flow, etc ...
Environment	Client/server Solution – Scalable and installation on virtual machines possible



Make your data flow

ABOUT MBT

Media & Broadcast Technologies® (MBT) is a dynamic and innovative software editor for the audio-visual and broadcast industry supplying high-quality solutions for ingest, playout automation, digital media asset management, production (studio) automation, graphic management, and advanced news & sports logging.

MBT provides a high level of customer support with an availability of 365 days a year and is a certified training centre.

For more information> www.mbt.tv

MEDIA&BROADCAST TECHNOLOGIES® - 11 rue de Courtalin – bât C – 77700 Magny-le-Hongre – FRANCE
Tel: + 33 (0)1 60 42 10 38 – Fax: +33 (0)1 60 42 07 39 – RCS Meaux – SIREN: 479 487 027

