

KEY FEATURES

- **Comprehensive:** ingest, browse, index, transfer, purge
- **Modular and configurable system**
- **On the shelf:** easy and quick deployment
- **Agnostic:** controls ingest servers of all brands
- **Frame accurate browsing with MBT's media player**
- **Media segmentation and marking**
- **Media validation**
- **File & Tape Ingest**
- **Crash & Scheduled recording**
- **Preset recording management**
- **Automatic optimised assignment of encoders**
- **Drag & drop between encoders**
- **User rights management**
- **Powerful search engine**
- **Connected to the Workflow Factory for automatic workflow triggering**
- **Connected to Sphere Service Manager to transfer, transcode and publish files.**
- **API record available for 3rd party systems**

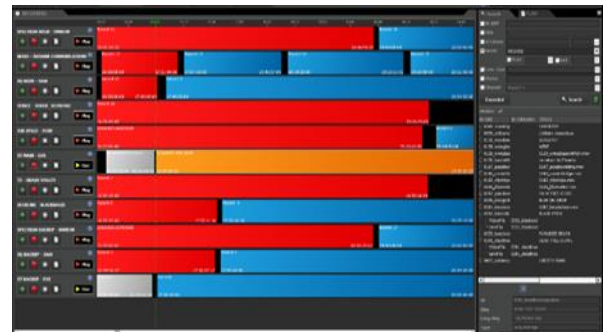
Phoenix Video Management

The Phoenix Video Manager is a comprehensive system for ingest, indexation, browsing, marking, quality check, purge and transfer of video files. It is a modular and configurable, on the shelf system, that can be adapted to the needs of the customer.

It is a client-server, desktop, Windows application connected to the Vertex Data platform that manages the data and the data flows. Vertex is the core system of MBT's software. The Vertex data platform is based on a data bus that uses a set of software servers that centralizes all information and provides the independent sub-systems, like the Phoenix Video Manager, with data.

Optimised User Interfaces

The client application of the Phoenix Video Manager allows the operator to manage all its video assets. This intuitive user interface offers operators an optimized view to manage their videos based on different tabs. Every tab can be considered as a module.



Tabs or Modules

The tabs in the interface make it possible for the user to navigate between the major features of the application. In the Administration tool we can define the user rights for every user.

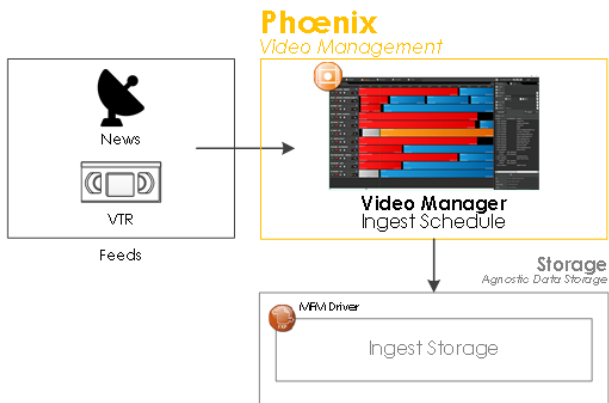


The interface has different tabs that give access to the indexation (detail tab), record, browse and transfer module. In the « Tasks » tab you can see all the jobs that are waiting to be digitised.

The system also disposes of a powerful search engine. It is possible to search for videos using various criteria like ID, localisation, title, channel or even a mix of criteria.

This multiple criteria or field search is possible by setting up fields according to the rights of a group or a person. The fields and the labels are defined in the list of available fields in the administration tool of the Phoenix Video Manager.

Tape and Feed Ingest



The Phoenix Video Manager offers the possibility to manage live programs through Crash or Scheduled Recording. Tape ingest is possible by controlling VTR's or a robotic solution.

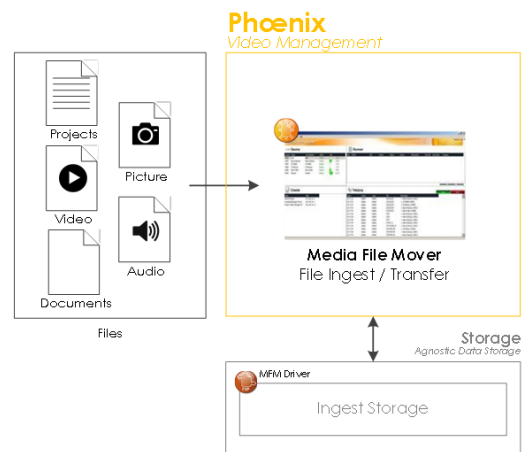
The programming of a live recording can be changed at any time even once the recording has already started. The Video Manager's back office application checks automatically the audio and video equipment during the ingest process using metadata from the source program.

This record module handles an unlimited number of acquisition channels. The system is agnostic and controls ingest servers from all kind of brands at the same time. You can switch recordings from one channel to another by drag-and-drop. The recording can be planned in an optimized way depending on the available encoders.

File Ingest

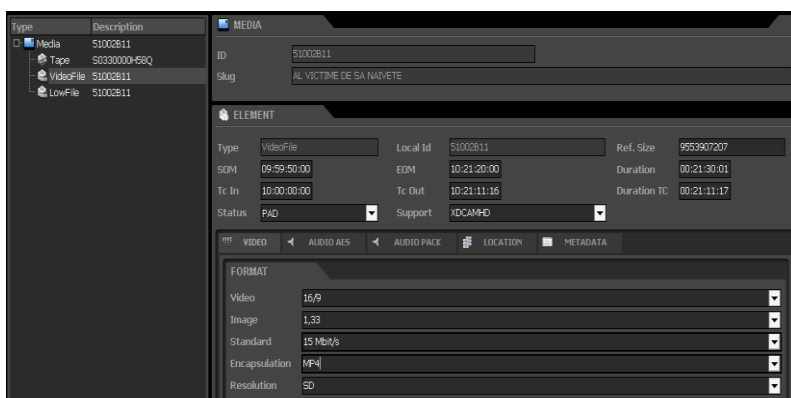
The Phoenix Video Manager can detect files through the Media File Mover. This back-office solution manages transfer jobs for all the system. It's directly connected to the Vertex Data Platform, allowing to add or delete automatically locations on the database.

The MFM server sends transfer (FXP) commands to the FTP servers and links them. The priority can be set for every command.



INDEXATION

Indexing – Referencing



The operator can enrich the media by indexing them.

Indexation allows a better classification of the program.

Through the indexation module the operator can manage and edit all metadata of the media and the attached elements. All video and audio details, but also the custom metadata defined in the admin tool, are referenced in this module.

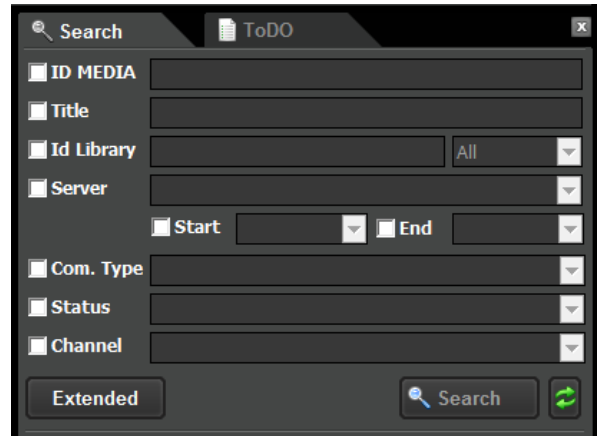
The system handles fixed metadata (title, category, sub-category...) to index the program. The users can also define their own metadata that will help the indexation of the media.

3rd party systems can also enrich MBT's database. Different formats, BXF, MXF or others, can be used for specific kind of metadata. Synchronization of MBT's database with databases of 3rd party systems, like a MAM or a PAM, is also an important way to enrich media.

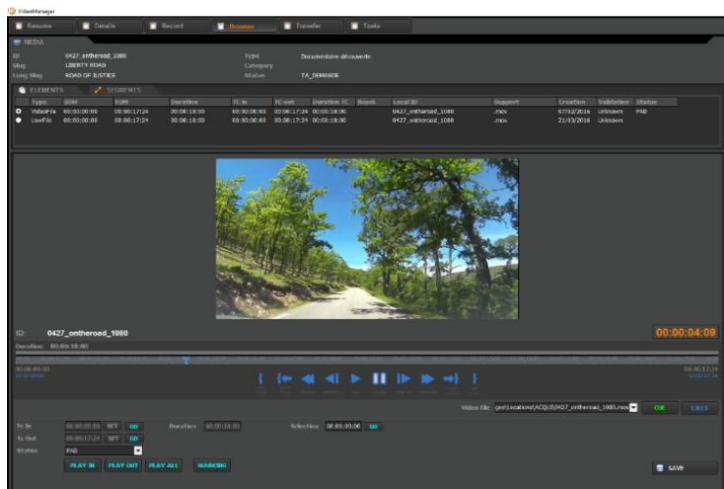
Browsing

Once the operator has found the media that he is looking for using the search engine, he can view them through the embedded MBT Media Player. The user selects the "Low Resolution" element and browses it directly on his computer. He can also use the "High Resolution" element by controlling a dedicated decoder.

The system can be extended with other MBT solutions: dynamic branding management (Liberty), media asset management (Sphere), workflow management (Workflow Factory and Sphere Service Manager) or playout automation (Phoenix). More information on: www.mbt.tv



Marking & QC



This module also allows to check the quality of the videos and the associated audio. This check can be both technical and editorial in order to ensure that the program is indexed correctly. The operator can thus select a program and view it. He can then modify the entry point and exit point (marking) and validate the program by changing the status of the program into "RTB" – Ready to Broadcast- for example. Changing the status of a program can trigger automatic workflows if the Phoenix Video Manager is connected to MBT's Workflow Factory. Thus all "RTB" files can be sent automatically to the video server for example.

TRANSFER & PURGE

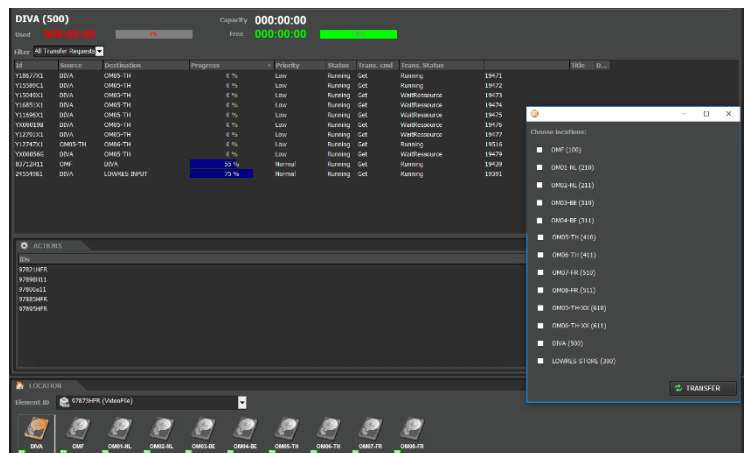
Transfer, purge or even transcode your file with a simple drag & drop

The Phoenix Video Manager's transfer module handles file transfers from one localisation to another by a simple drag & drop.

The localisation where the file is present is highlighted: if the file is present on several localisations, then the various localisations lighten up.

In the history tab you can see all the transfers that are carried out, that are in process or that are planned. This tab also shows the encountered errors. The operator can restart defective transfers once the problem is solved.

This module also offers the possibility to send the video files manually to the transcoders and to re-ingest them in the right format. If the system is connected to the Sphere Service Manager, the files can be automatically transcoded, transferred and even published depending on the configuration of the workflows.



TECHNICAL INFORMATION

Features	Description
Data bus	Connection with the Vertex databus
Open Architecture	Exchange possible via BXF, API, Web Service (SOAP), XML, MOS, FIMS
Supported Video File Formats	All broadcast formats: MXF, QuickTime, MPEG 1-2-4, H264, H265, WMV...
File Ingest	Automatic or manual file detection
Tape Ingest	Ingest through control of VTR or robotic tape system
Crash recording	Start a "crash" record with default settings
Scheduled recording	Set record tasks periodically
Dynamic modification	Modify dynamically the duration of the recording task
Drag & drop	Copy the scheduled record task from one encoder to another
Optimised recording assignment	Optimised and automatic assignment of the available encoding channels
Colour management	Colour shows the status of the recording task (in progress, completed, error ...)
Preset management	Set automatic rules for the recording tasks
Alarm	Size occupancy rate of servers
Search engine	Search by multi-criteria or fields
Transfer	Manual or automatic transfer of files between different localisations
Purge	Manual or automatic purge based on pre-defined rules
Media segmentation	Create different segments of your media
User rights management	User rights for a user or a group of users based on login credentials
Frame Accuracy	Frame accurate video browsing and marking through the MBT media player
Automatic Workflow	Automatic workflow triggering if connected to MBT's Workflow Factory
Unicode System	Benefit from this standard to use different languages
Control of ingest servers	Omneon (Harmonic), sQ (SAM), K2 (GV), Venice (Rohde & Schwarz), Airspeed (Avid), Nexio (Imagine), etc.
Device Control	API, VDCP, GPI, Corba, Oxtel,....
API Record	API for the record system available



Make your data flow

ABOUT MBT

Media & Broadcast Technologies ® (MBT) is a dynamic and innovative software editor for the audio-visual and broadcast industry supplying high-quality solutions for ingest, playout automation, digital media asset management, production (studio) automation, graphic management, and advanced news & sports logging.

MBT provides a high level of customer support with an availability of 365 days a year and is a certified training centre.

For more information > www.mbt.tv

MEDIA & BROADCAST TECHNOLOGIES® - 11 rue de Courtalin – bât C – 77700 Magny-le-Hongre – France
Tel: + 33 (0)1 60 42 10 38 – Fax: +33 (0)1 60 42 07 39 – RCS Meaux – SIREN: 479 487 027